

## VDX60

Frame size	Stage	Ratio	※1	※2	※3	※4	※5	※6	※7
			Nominal output torque	Maximum output torque	Emergency stop torque	Nominal input speed	Maximum input speed	Permitted radial load	Permitted axial load
			[Nm]	[Nm]	[Nm]	[rpm]	[rpm]	[N]	[N]
VDX60	Single	3	18	35	80	3000	6000	430	310
		4	27	50	100	3000	6000	470	360
		5	27	50	100	3000	6000	510	390
		7	27	50	100	3000	6000	570	460
		8	27	50	100	3000	6000	600	480
		9	18	35	80	3000	6000	620	510
	Double	10	18	35	80	3000	6000	640	530
		15	18	35	80	3000	6000	740	630
		16	27	50	100	3000	6000	750	650
		20	27	50	100	3000	6000	810	720
		25	27	50	100	3000	6000	870	790
		28	27	50	100	3000	6000	910	830
		30	18	35	80	3000	6000	930	860
		35	27	50	100	3000	6000	980	920
		40	27	50	100	3000	6000	1000	970
		45	18	35	80	3000	6000	1100	1000
		50	27	50	100	3000	6000	1100	1100
		70	27	50	100	3000	6000	1200	1100
		80	27	50	100	3000	6000	1200	1100
		90	18	35	80	3000	6000	1200	1100
100	18	35	80	3000	6000	1200	1100		

※8

※9

Frame size	Stage	Ratio	※8	※9	Moment of inertia ( ≤Ø8 )	Moment of inertia ( ≤Ø14 )	Moment of inertia ( ≤Ø19 )
			Maximum radial load	Maximum axial load	[kgcm <sup>2</sup> ]	[kgcm <sup>2</sup> ]	[kgcm <sup>2</sup> ]
			[N]	[N]	[kgcm <sup>2</sup> ]	[kgcm <sup>2</sup> ]	[kgcm <sup>2</sup> ]
VDX60	Single	3	1200	1100	0.150	0.26	0.54
		4	1200	1100	0.100	0.21	0.49
		5	1200	1100	0.080	0.19	0.47
		7	1200	1100	0.064	0.18	0.45
		8	1200	1100	0.060	0.17	0.45
		9	1200	1100	0.058	0.17	0.45
	Double	10	1200	1100	0.056	0.17	0.44
		15	1200	1100	0.064	0.18	—
		16	1200	1100	0.070	0.18	—
		20	1200	1100	0.062	0.17	—
		25	1200	1100	0.062	0.17	—
		28	1200	1100	0.068	0.18	—
		30	1200	1100	0.052	0.16	—
		35	1200	1100	0.061	0.17	—
		40	1200	1100	0.051	0.16	—
		45	1200	1100	0.061	0.17	—
		50	1200	1100	0.051	0.16	—
		70	1200	1100	0.051	0.16	—
		80	1200	1100	0.051	0.16	—
		90	1200	1100	0.051	0.16	—
100	1200	1100	0.051	0.16	—		

※10

Frame size	Stage	Ratio	※10						
			Precision backlash	Standard backlash	Efficiency( η )	Weight	Temperature	Service life	Protection level
			arcmin	arcmin	%	[kg]	℃	hr	
VDX60	Single	3~10	≤ 3	≤ 5	≥ 95%	1.4	-10℃~+90℃	≥ 20000	IP65
	Double	15~100	≤ 5	≤ 7	≥ 92%	1.6			

※1 With nominal input speed, service life is 20,000 hours.

※2 The maximum torque when starting and stopping.

※3 The maximum torque when it receives shock. (up to 1,000 times)

※4 The maximum average input speed.

※5 The maximum momentary input speed.

※6 With this load and nominal input speed, service life will be 20,000 hours. (Applied to the output shaft center, at axial load 0)

※7 With this load and nominal input speed, service life will be 20,000 hours. (Applied to the output side bearing, at radial load 0)

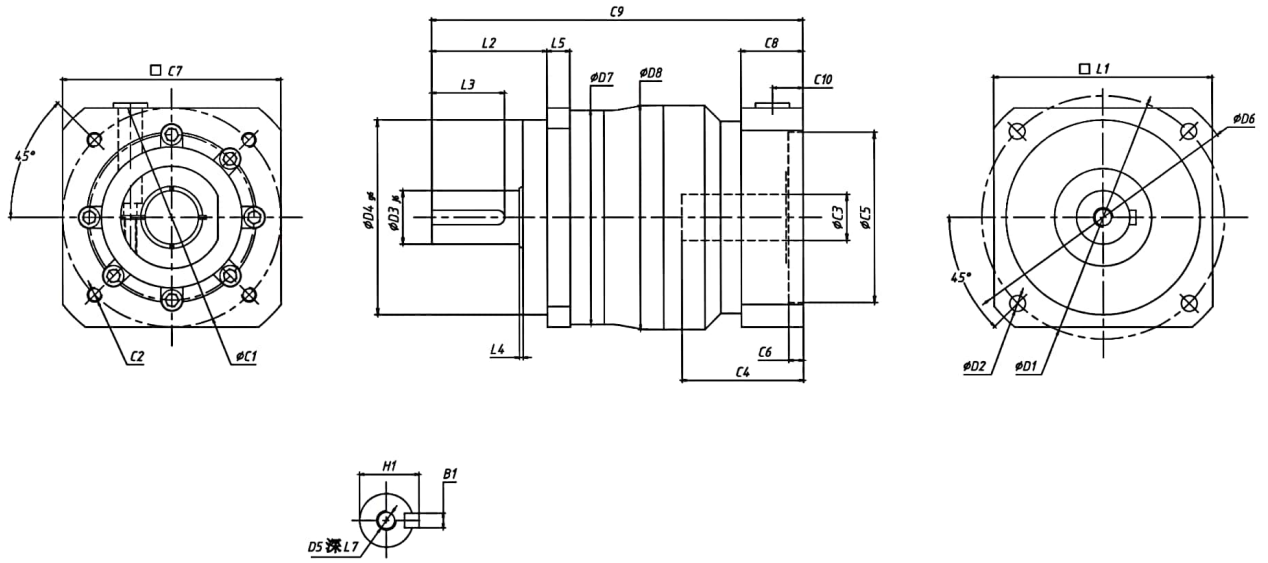
※8 The maximum radial load the gearbox can accept.

※9 The maximum axial load the gearbox can accept.

※10 The weight may vary slightly model to model.

# SAM GEARBOX

## VDX60 DRAWING



[unit:mm]

Dimension	VDX60	
D1	70	
D2	5.5	
D3	16	
D4	50	
D5	M5 X 0.8P	
D6	80	
D7	62	
D8	65	
L1	60	
L2	36.5	
L3	25	
L4	1.5	
L5	6	
C1 <sup>1</sup>	66.6	70
C2 <sup>1</sup>	M4 X 0.7P	M5 X 0.8P
C3 <sup>1</sup>	≤ 8	≤ 16
C4 <sup>1</sup>	25	32
C5 <sup>1</sup>	38.1	50
C6 <sup>1</sup>	4	3
C7 <sup>1</sup>	65	66
C8 <sup>1</sup>	17	-
C9 <sup>1</sup>	106	115
C10 <sup>1</sup>	10.5	10.5
B1	5	5
H1	18	18

※1 Length will vary depending on motor.

※2 Bushing will be inserted to adapt to motor shaft.